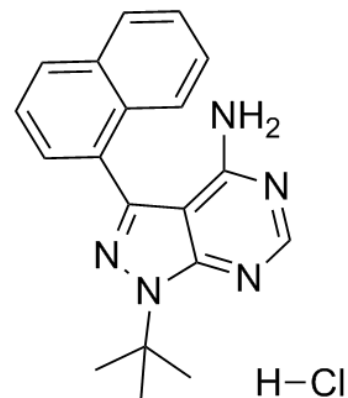


Product Name : 1-Naphthyl PP1 hydrochloride
Cat. No. : PC-43793
CAS No. : 956025-47-1
Molecular Formula : C₁₉H₂₀ClN₅
Molecular Weight : 353.8486
Target : Src
Solubility : DMSO: ≥ 73 mg/mL



Biological Activity

A potent Src family kinases with IC₅₀ of 1.0/0.6/0.6 μM for v-Sr/c-Fyn/c-Abl; less potent for CDK2 and CaMK II; also inhibits Kin28 and Srb10 kinases; potently blocks prostate cancer cell proliferation by inducing G₂/M arrest.

References

- Bishop AC, et al. Nature. 2000 Sep 21;407(6802):395-401.
Kanin EI, et al. Proc Natl Acad Sci U S A. 2007 Apr 3;104(14):5812-7.
Liu Y, et al. Mol Cell Biol. 2004 Feb;24(4):1721-35.

Caution: Product has not been fully validated for medical applications. Lab Use Only!

E-mail: tech@probechem.com